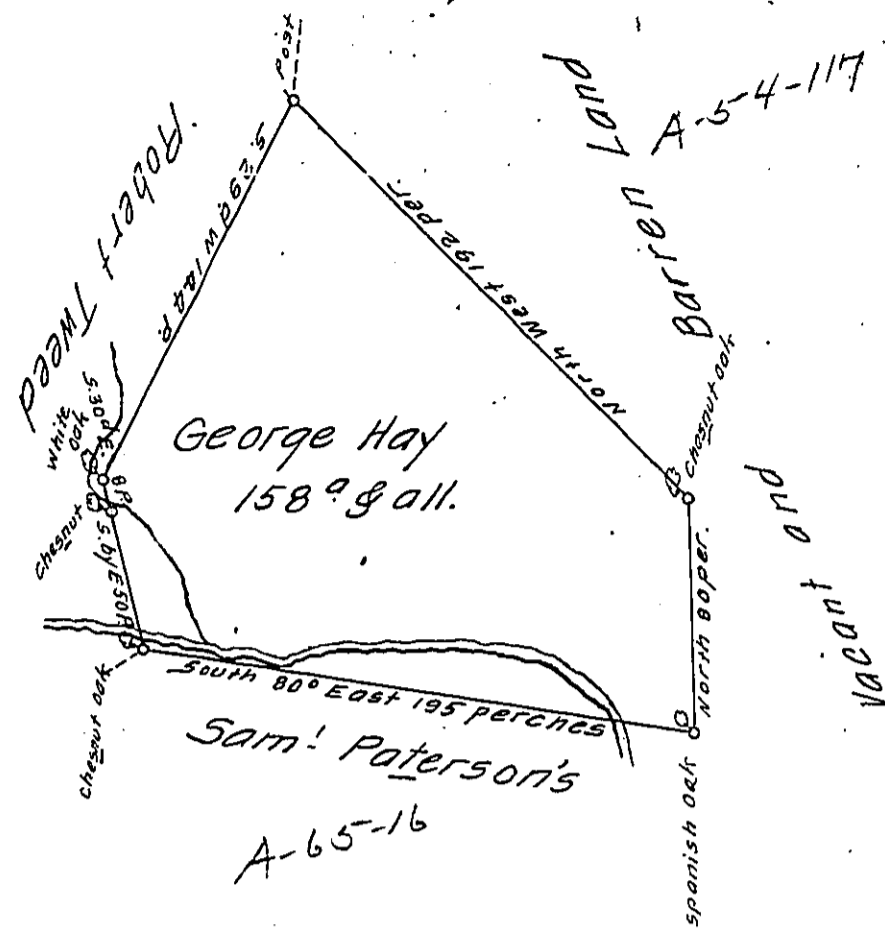


H-309



By Virtue of a Warrant from the Proprietor Dated the 14th day of October Anno Dom 1737. The Above Described tract of Land was Surveyed Unto George Hay in the Township of Sadsbury in Lancaster County. Beginning at a Post. Thence South 29 Degrees West by Robert Tweed's Improvement 144 perches to a White Oak. Thence South 30 Deg^s East by the Same 8 perches to a Chesnut. Thence South by East by the Same 50 perches to a Chesnut Oak. Thence South 80 Deg. East by Samuel Paterson's Settlement 195 perches to a Spanish Oak. Thence North by Vacant Land 80 perches to a Chesnut Oak. Thence North West by ye sd Land 192 perches to ye place of Beginning. Containing One Hundred and Fifty Eight Acres beside the Allowance of Six & Cent.

Sam. Lightfoot —

Sur'd 13th 1^{mo} 1738.

IN TESTIMONY that the above is a copy of the original remaining on file in the Department of Internal Affairs of Pennsylvania, made conformably to an Act of Assembly approved the 16th day of February, 1833, I have hereunto set my Hand and caused the Seal of said Department to be affixed at Harrisburg, this twenty ninth day of September 1911.

Henry Houch
 Secretary of Internal Affairs.